

## SUMMER 2 YEAR 3 HOME LEARNING

# WHAT DOES THE JURASSIC COAST TELL US ABOUT PREHISTORIC LIFE?

Our last half term of year 3 is one of our favourites – Jurassic Coast! In Geography we look at natural and man-made features of the coast as well as lots of map work. In science we how rocks and fossils are formed and look at what makes up our local coastline.

Below are some suggestions of things you could do at home. You can pick one or do as many as you like and you might have some super ideas of your own too!

Please email any photos to [year3@damers.dorset.sch.uk](mailto:year3@damers.dorset.sch.uk). All home learning to be in school on Tuesday 15th July for a showcase.



Make your own fossil –  
<https://www.bbc.co.uk/cbeebies/makes/presenters-making-a-fossil>



Draw a cartoon to show how a fossil is formed.



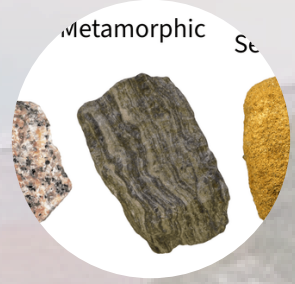
Create some beach pebble art.



Create your own sea poem or shanty.



Go to the coast and collect some interesting things in a 'coastline jar'.



Find as many different types of rocks as you can: sedimentary, limestone, chalk etc.



Create a fact sheet about Mary Anning



Walk part of the Jurassic Coast – create a map of your journey.

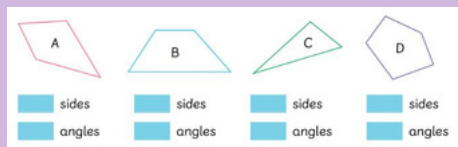


Create a 'how to fossil hunt' fact sheet.

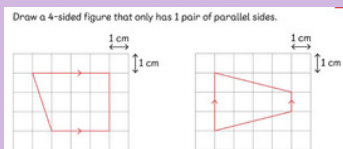
# Knowledge and Vocabulary

## Maths

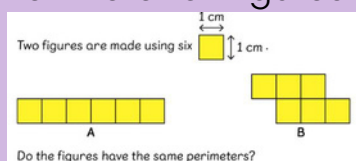
### Angles



### Lines and Shapes



### Perimeter of Figures



### Vocabulary

2D shape, length, total, side, cm, perimeter, straight line, angle, right angle, perpendicular, parallel, horizontal, vertical, quadrilateral

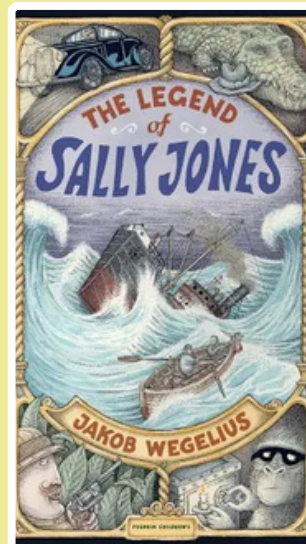
## Literacy

### The Legend of Sally Jones

#### Main Outcome:

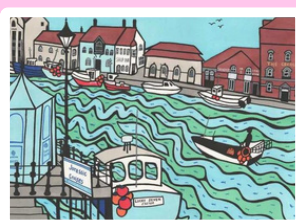
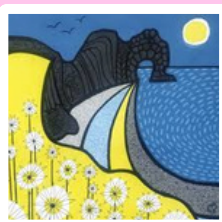
Adventure story in the style of the author Jakob Wegelius

- Birth Certificate
- Letter
- Class book of 'tricks'
- Newspaper article
- Dialogue
- Advert
- Diary Entry
- Leaflet
- Telegram
- Booklet



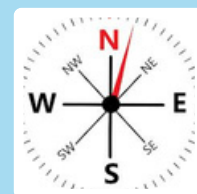
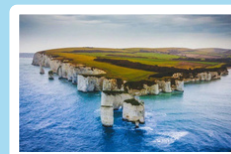
## Art

We will be exploring the art of Gina Marshall and creating our own patterns based on the Jurassic Coast.



## Geography

As well as exploring features of the Jurassic Coast, we'll be developing our map reading skills.



### Vocabulary

Jurassic, physical and human features, fossil forest, coordinates, compass points

## Lulworth Cove

We will be visiting Lulworth Cove on Thursday 12th June 2025 to explore the Jurassic Coast.



We will be using our map skills and looking for human and physical features of the local landscape.

## Science

We will be learning about rocks and fossils, the 3 main types of rocks and their qualities.



### Vocabulary

igneous, sedimentary, metamorphic, magma, lava, sediment, permeable, impermeable